

MASTERFLEX™ 612

Advanced hydro-swelling gasket in paste form

Description

MASTERFLEX 612 is a one component hydro-swelling gasket in paste form. Its suitable for the permanent sealing of construction joints in concrete structures

Uses

Construction joints of every kind (fig. 1 to 4)

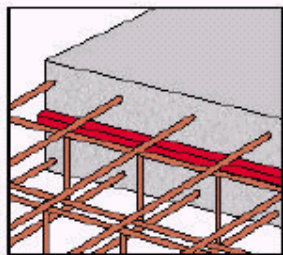


Fig 1

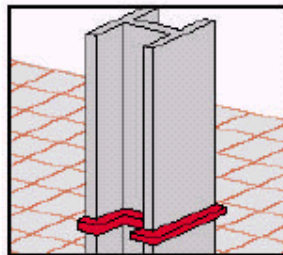


Fig 2

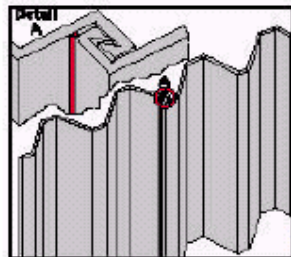


Fig 3

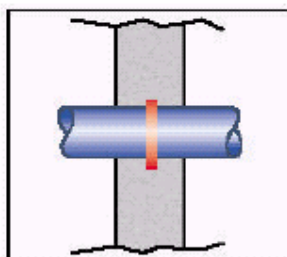


Fig 4

Advantages

- Simple use
- High swelling capacity in contact with water
- Highly resistant to chemicals and saline liquids (see chemical resistance table)
- Good adhesion to dry and moist surfaces (concrete, steel and plastics)
- Reversible swelling process.
- MASTERFLEX612 swelling paste is supplied in ready to use cartridges
- The substrate must be free of grease, dust and loose particles. Do not apply on frozen surfaces.
- Hardening prior to concreting is min. 24 hours.
- The swelling paste should be protected against premature swelling.
- When concreting, take care to ensure that the expanding paste is fully covered by concrete.

Typical Properties

Aspect	: Beige coloured paste
Mix density	: 1.5 kg/litre
Resistance to micro-organisms	: Resistant
Re-swelling capacity	: > 80% in potable water
Service temperatures	: - 30°C to 50°C
Setting time	: 4 – 6 hours

Chemical resistance

Test Liquid	Stability	Swelling
Unleaded fuel	resistant/discolouring	~45%
Gasoline	resistant/discolouring	~2%
Toluene	Resistant	~140%
Xylene	Resistant	~85%
Methanol 50%	Resistant	~400%
Isopropanol 50%	Resistant	~500%
N-methylpyrrolidone	limited resistant/discolouring	~615%
Ethylacetate	Resistant	~195%
Methylisobutylketone	Resistant	~85%
Acetic acid 10%	limited resistant	~150%
Formal 36%	Resistant	~500%
Sulphuric acid 10%	Resistant	~190%
Sulphuric acid 2%	Resistant	~210%
Sulphuric acid 26	Resistant	~25%

Specification Clause:

All the irregular and accidental construction joints shall be made watertight using MASTERFLEX 612, hydro-swelling polymeric paste. The paste shall be formulated to exhibit low premature swelling (less than 50% with in 12 hours) and shall not release super absorbents during its service life. The re-swelling paste shall have low swelling pressure; not exceeding 0.25 MPa at full swelling capacity.

Directions for use

- The paste can be applied with a suitable hand-held caulking gun.
- Puncture and lift the double layer bottom of the cartridge, remove the pellets.
- Puncture the opening of the cartridge and free entire cross section
- Cut the nozzle diagonally to obtain an opening of 6- 10mm and place the cartridge in the caulking gun.
- Direct the caulking gun along the surface at an angle of 45° extrude paste evenly and press the paste bead against the substrate.
- For large jobs and ease of application we recommend pneumatic guns or mechanical guns with high gear.



The Chemical Company

Coverage

Depending upon substrate approx. 5m per 310 ml cartridge.

Packaging

Available in 310ml cartridge; 6 cartridges per carton

Storage and Shelf life

Store under cover, out of direct sunlight and protect from extremes of temperature. In tropical climates the product must be stored in an air-conditioned environment.

Shelf life is 12 months when stored as above.

Failure to comply with the recommended storage conditions may result in premature deterioration of the product or packaging. For specific storage advice please consult BASF's Technical Services Department.

Safety precautions

As with all chemical products, care should be taken during use and storage to avoid contact with eyes, mouth, skin and foodstuffs (which can also be tainted with vapour until product fully cured or dried). Treat splashes to eyes and skin immediately. If accidentally ingested, seek immediate medical attention. Keep away from children and animals. Reseal containers after use. Do not reuse containers for storage of consumable item. For further information refer to the material safety data sheet. MSDS available on demand or on BASF construction chemicals web site.

Note

All BASF Technical Data Sheets are updated on regular basis; it is the user's responsibility, to obtain the most recent issue.

Field services where provided, does not constitute supervisory responsibility, for additional information contact your local BASF representative.

Disclaimer

Whilst any information contained herein is true, accurate and represents our best knowledge and experience, no warranty is given or implied with any recommendations made by us, our representatives or distributors, as the conditions of use and the competence of any labour involved in the application are beyond our control.

TDS Ref. no.: Mfxxx612/02/1206

BASF Construction Chemicals (India) Private Limited

C-68, MIDC, Thane Belapur Road, Turbhe, Navi Mumbai - 400 613
India

Tel: +91 22 27619992/3, Fax: +91 22 27619242

e-mail: basfcc@vsnl.net

www.basf-cc.co.in

Page 2 of 2

