

Meyco FIB SP640/650/665

Polypropylene Fibre: Re-enforcing fibre for shotcrete and concrete

Description

This fibre is extruded from a natural Polypropylene homo polymer and formed into a flat profile with profiled surface in order to anchor it in a cementitious matrix. Due to a combination between the large number of fibres per kg, it's shape and anchoring capability with the concrete matrix, giving "re-inforcing" to the shotcrete / concrete and provides a toughness and ductility to the material.

Features and benefits

The Meyco FIB SP 640/650/665 fibre is user friendly and is easy to dose into concrete mixes. It also has high resistance to acid/alkali attack and is therefore suitable for use in wet underground conditions.

Recommended for

The re-inforcement of concrete, wet and dry shotcrete applications

Dosage and batching

The fibres must be added to the concrete mixer after the water and admixtures.

Mix for at least 2-3 minutes to ensure even distribution in the mix. There will be a slight slump loss after addition of the fibres – do not add extra water but design the mix to allow for the addition of the fibres.

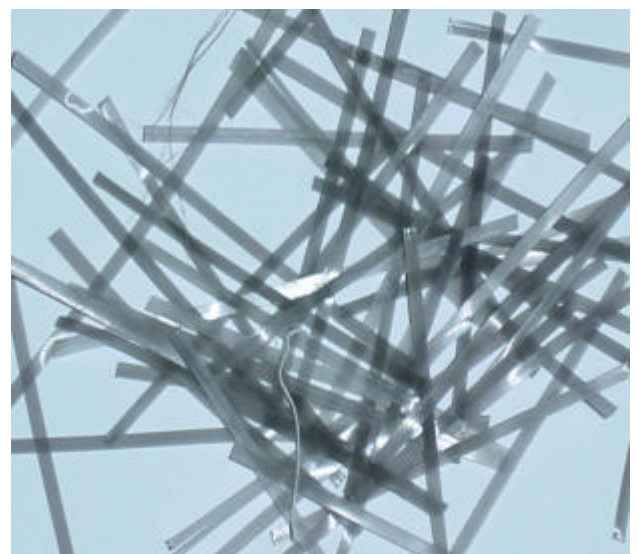
Typically 5 kg/m³ will produce an energy absorption of 700 - 800 Joules for an in-situ 35 MPa shotcrete. Site trials **MUST** however be carried out to determine the performance of the fibre and the shotcrete mix.

Packaging

The fibres are packed loose in transparent plastic bags or in cardboard boxes in weights to suit dosing into the mixer. Weights should be specified when ordering.

Performance data and physical properties

Properties	Value
Dimensions (Width x Thickness)	1.8 x 0.13mm
Fibre lengths	40, 50, 65mm
Fibre Cross section	0.234
Density (g/cm ³)	0.88 – 0.92
Colour	Translucent, Black
Melting Point (oC)	165
Ignition Point (oC)	330
Tensile strength at yield (N/mm ²)	1004
Elongation at yield, (%)	24.4
Elastic Modulus of polymer (Mpa)	1550
Water absorption	0
Acid/alkali resistance	High
EFNARC Plate test (Joules)	700–800 @ 4.5-6kg/m ³
Round Determinate Panel Test (J)	280 - 320 @ 4.5-6kg/m ³



Meyco FIB SP640/650/665

Storage

Material is very stable, no foreseen hazards.
Protect against fire.

Safety precautions

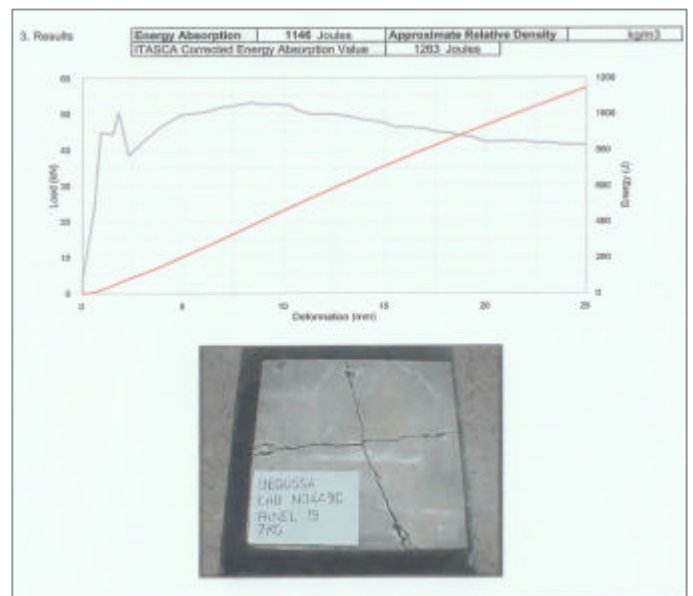
Product is extremely stable, presenting little hazard to health. However, in fire conditions, carbon monoxide, carbon dioxide and other gases or fumes may be evolved.

Note

Field service, where provided, does not constitute supervisory responsibility. For additional info contact your local BASF CC SA representative. BASF CC reserves the right to have the true cause of any difficulty determined by accepted test methods.

Performance

EFNARC panel tested with 7 kg / m³ of Meyco FIB SP 665 giving an Energy Absorption value of 1263 Joules.



Imported & Marketed in India by:

BASF India Limited(Construction Chemicals Div)

Plot No.37,Chandivali Farm Road,Chandivali,Andheri(E)

Mumbai - 72 Tel: 28580200 Fax: 28478381

e-mail: construction-india@basf.com www.basf-cc.co.in

P.O. Box 420, Westonaria, 1780
11 Pullinger Street, Westonaria, 1779
Tel: +27 11 754 1343
Fax: +27 11 754 1105
e-mail: basfcc@mweb.co.za

61 Brunton Circle, Founders Hill, Modderfontein, 1645
P O Box 75845, Garden View, 2047
Phone +27-11-452 6557
Fax +27-11-452 3595
e-mail: basfcc@mweb.co.za